

Subject: DG-25

Date: December 2020

New design leads to increased durability

After more than 10 years of successful production and sales of the DG-series demolition grabs, it is now time to introduce a new model in the range:

NPK[®] DG-25



The DG-25 fulfils the demand for a model between DG-20A and the DG-30A. Weight as well as volume, the new DG-25 fits sublime in the total range of the DG sorting- and demolition grabs.

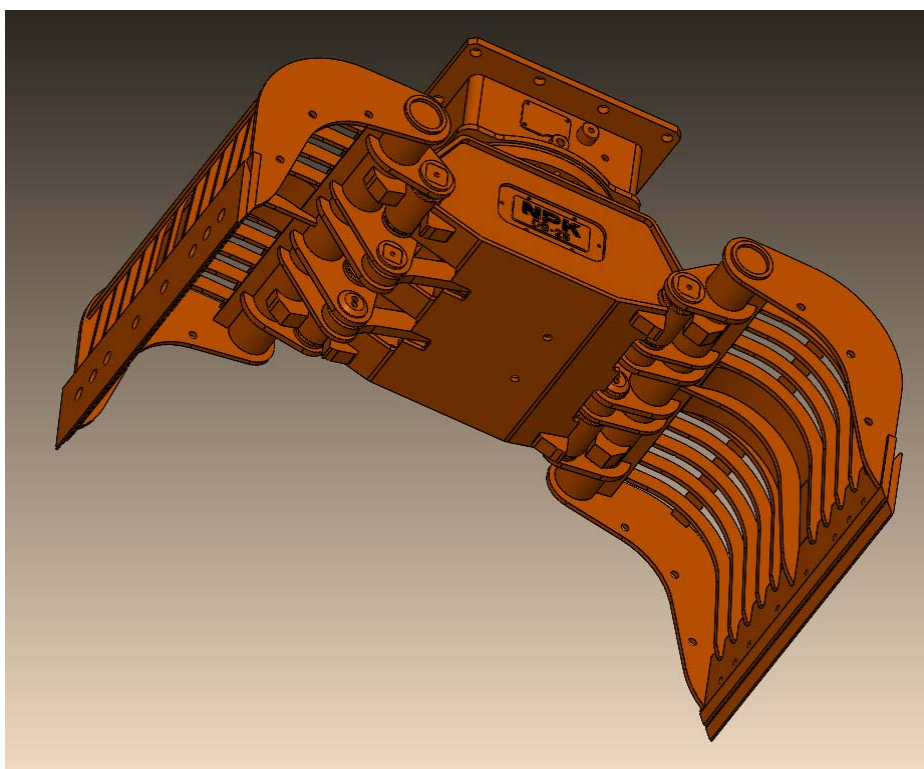
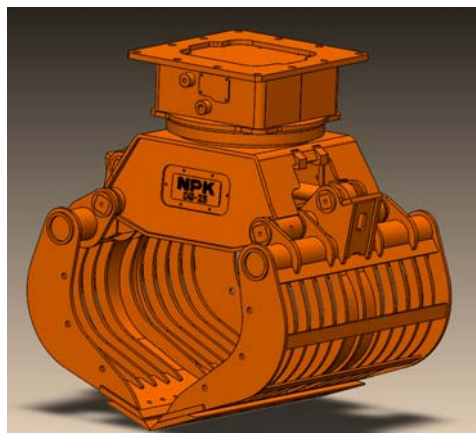
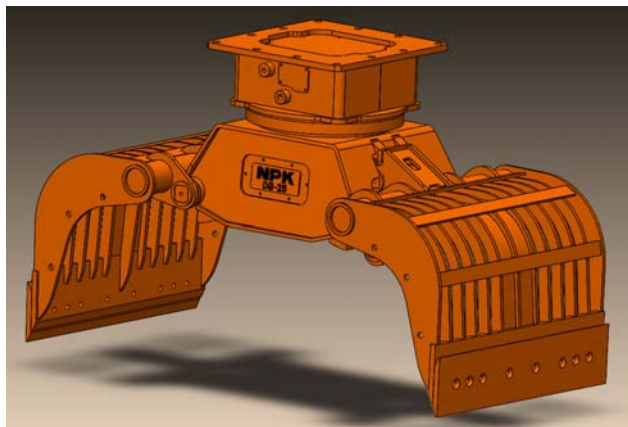
The DG-25 comes with new designed arms, combined with the new style frame similar to the current DG-20A and DG-30A. This frame offers more stiffness and better protection. Dirt and waste will be kept out much more and hydraulic components are even better protected against damage. Due to the powerful cylinder, the maximum closing force reach up to 60 kN (at 35 Mpa).

The DG-25 is equipped with a high torque rotation motor. As an option the grab can be delivered with double rotation motor for heavy (loading) application.

The DG-25 has a operating weight of 1450kg and will be suitable for excavators from 16 to 26 ton.

Subject: DG-25

Date: December 2020

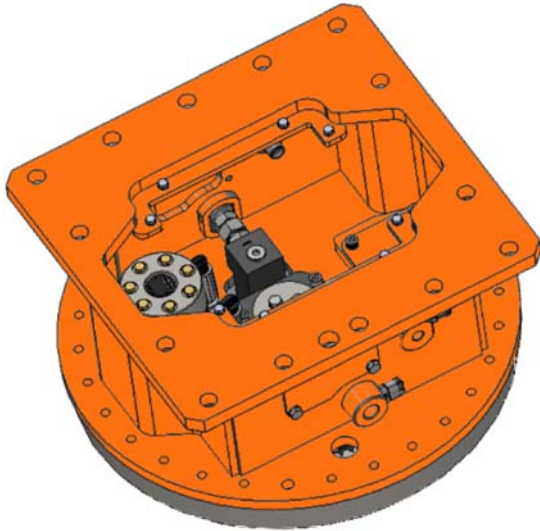


Model	DG-20A	DG-25	DG-30A
Excavator weight (t)	14 - 20	16 - 26	18 - 30
Weight (kg)	1230	1450	1850
Capacity (L)	500	600	800
Working pressure (MPa)	25 - 35	25 - 35	25 - 35
Oil flow (l/min)	60 - 100	60 - 100	80 - 120
Closing force (kN)	52	60	72
Rotation pressure (MPa)	10 - 14	10 - 14	10 - 14
Rotation oil flow (l/min)	20 - 30	20 - 30	20 - 30
Opening width (mm)	2050	2160	2410
Height (mm)	1300	1330	1485
Width (mm)	950	1115	1115

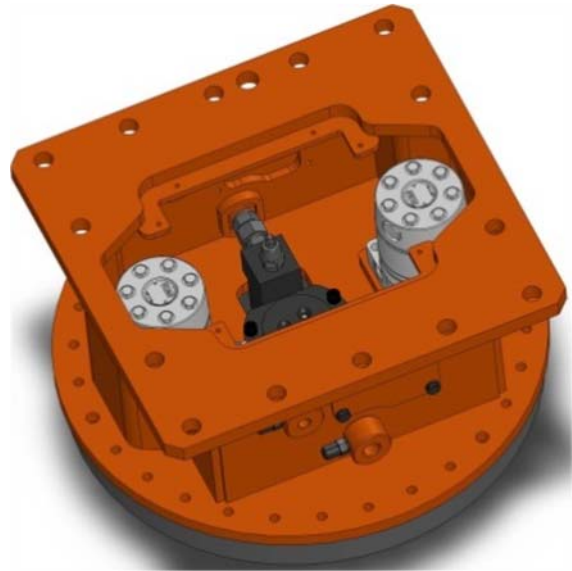
Subject: DG-25

Date: December 2020

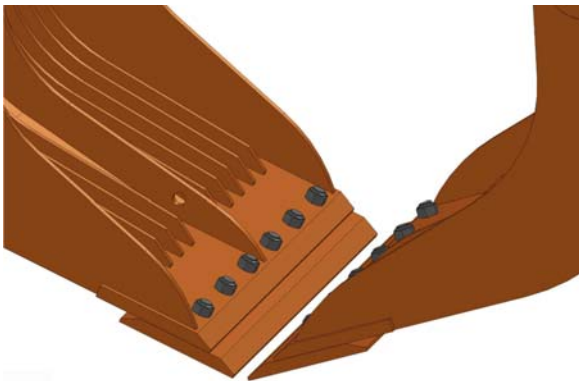
Options:



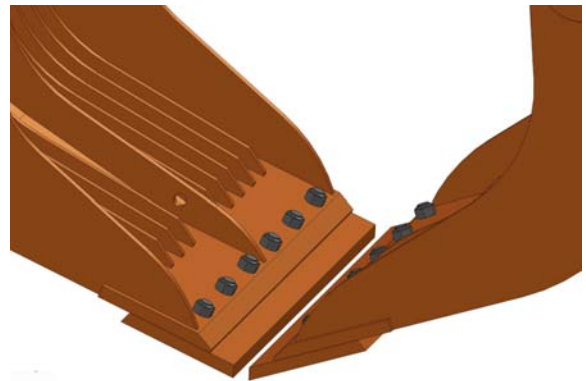
Standard: 1 Motor



Optional: 2 Motors



Standard: Sharp Edge Cutter



Optional: Blunt Edge Cutter

Product Info

Subject: DG-25

Date: December 2020



Standard: Bars



Optional: Perforated Plate

AVAILABILITY DG-25
PRICING

: Winter 2020/2021
: PLEASE CONTACT ROBIN PREIN