

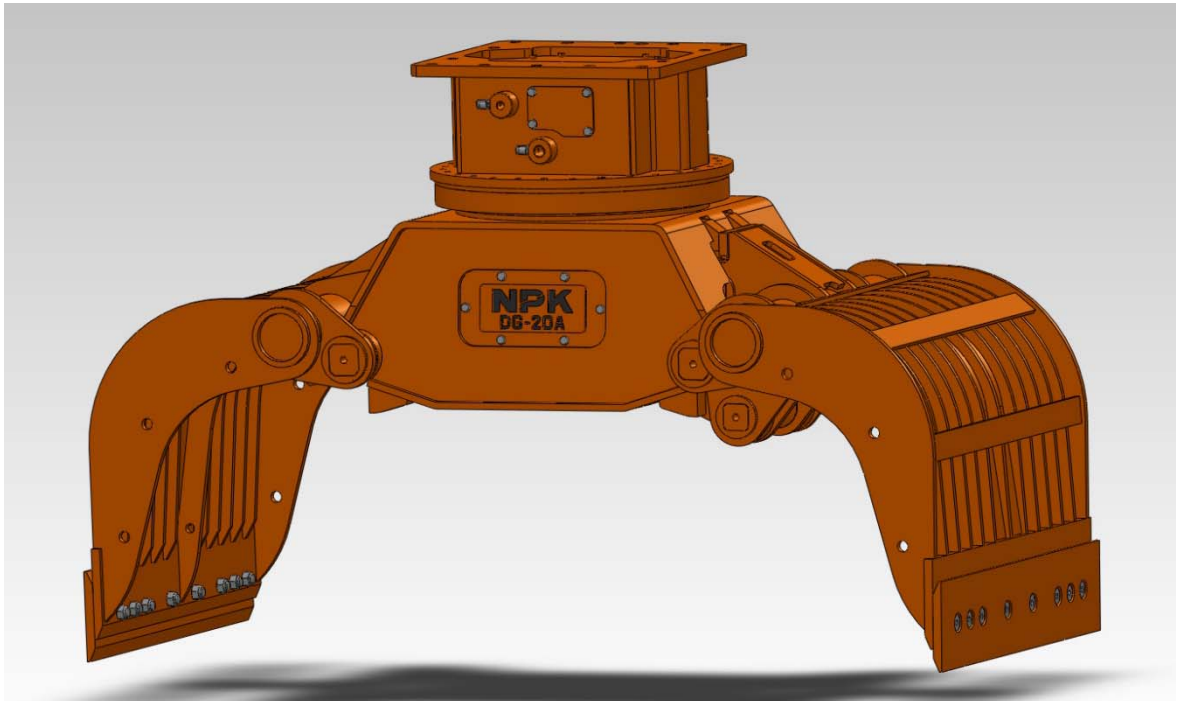
Subject: DG-20A

Date: May 2020

New design leads to increased durability

After more than 10 years of successful production and sales of the demolition grab model DG-20, with some minor and more significant modifications and improvements throughout the years, it is now time to introduce the successor of this model:

NPK[®] DG-20A



The DG-20A comes with a new style of frame. This frame offers even more stiffness and better protection than before. Dirt and waste will be kept out much more and hydraulic components are even better protected against damage.

Subject: DG-20A

Date: May 2020

New Features:

- New redesigned frame (moving cover at the bottom has been deleted)
- Link on DG-20A is straight (on DG-20 it was curved)
- Two short Link Pins (on DG-20 there is one long Link Pin, which also held the moving cover)
- More bolts to mount the replaceable cutters (8 pieces vs 6 pieces)
- Covers on both sides of frame with "NPK" and "model name"

Features:

- Oversized main pins all combined with wear bushings and sealed with O-rings.
- Powerful hydraulic rotation motor
- Possibility of 2 rotation motors
- No drain line needed
- Hydraulic cylinder with cushion at the end of the stroke (opening)
- Hydraulic side connections
- Easy maintenance
- Easy accessibility to adjustment of rotation speed.
- Pilot check valve against unexpected opening of the arms
- Arms build with Hardox 400
- Frame side plates and bottom plate made of Hardox 400
- Cutters with a hardness of 500HB
- NPK standard bolt pitch
- Strong Bearing (Slewing ring)
- Break valves integrated in hydraulic motor
- High closing force

Specifications:

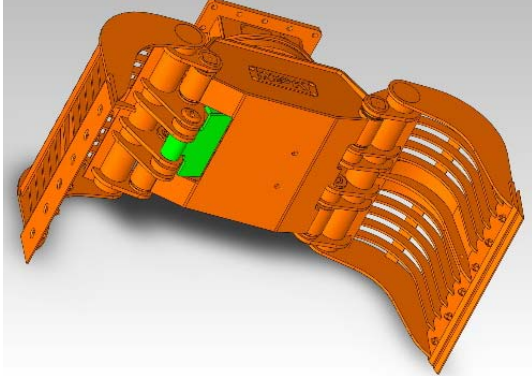
| | |
|----------------------------------|---------------|
| Model | DG-20A |
| Excavator weight (t) | 14 - 20 |
| Weight (kg) | 1230 |
| Capacity (L) | 500 |
| Working pressure (MPa) | 25 - 35 |
| Oil flow (l/min) | 60 - 100 |
| Closing force (kN) | 52 |
| Rotation pressure (MPa) | 10 - 14 |
| Rotation oil flow (l/min) | 20 - 30 |
| Opening width (mm) | 2050 |
| Height (mm) | 1300 |
| Width (mm) | 950 |

Product Info

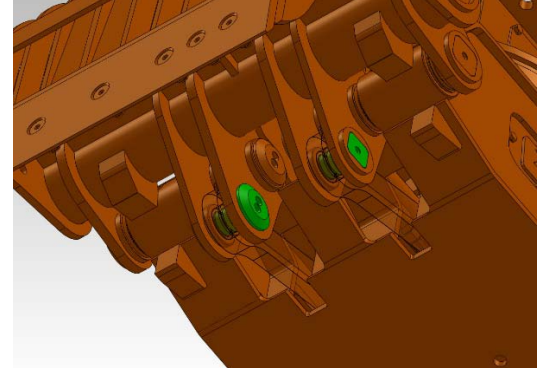
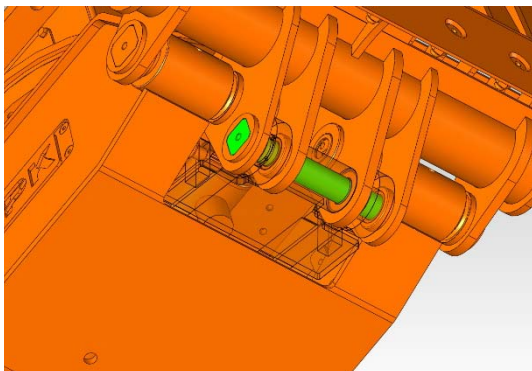
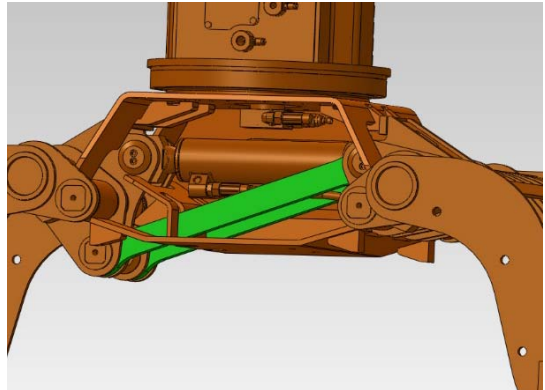
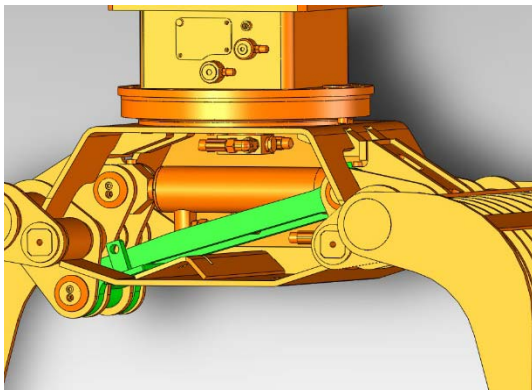
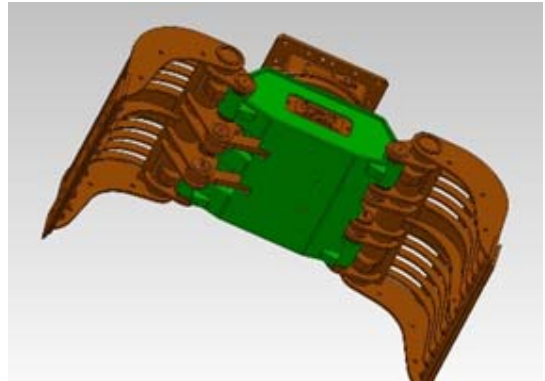
Subject: DG-20A

Date: May 2020

DG-20



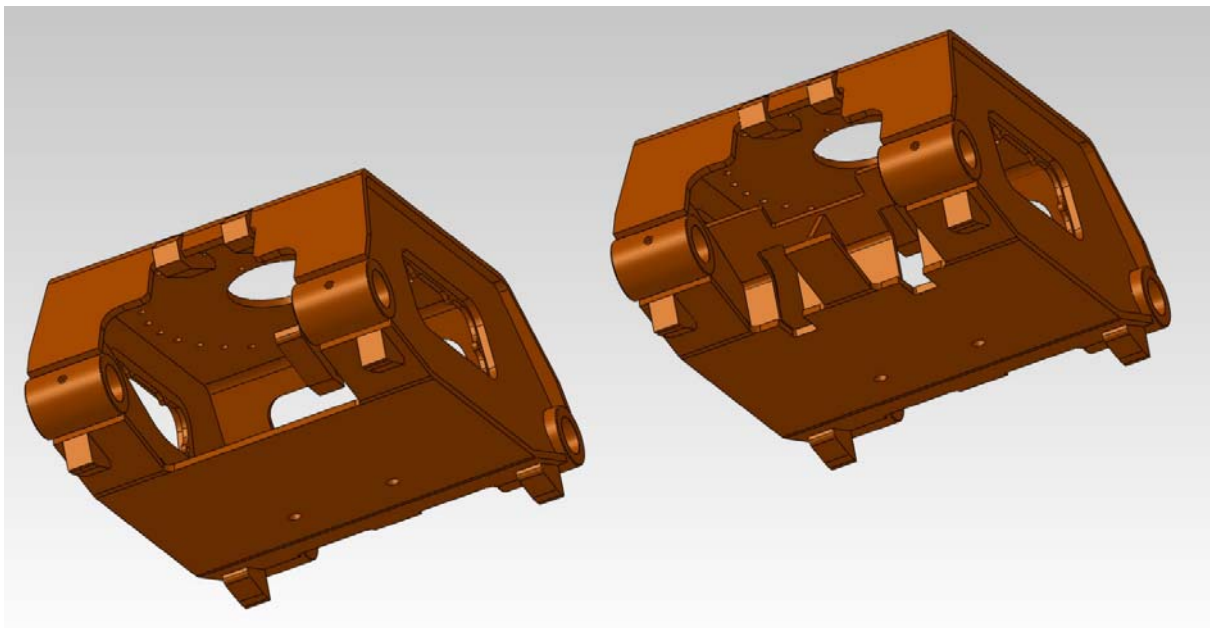
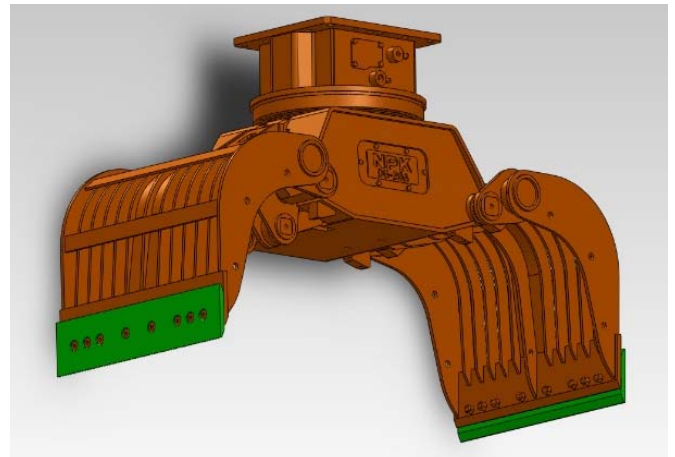
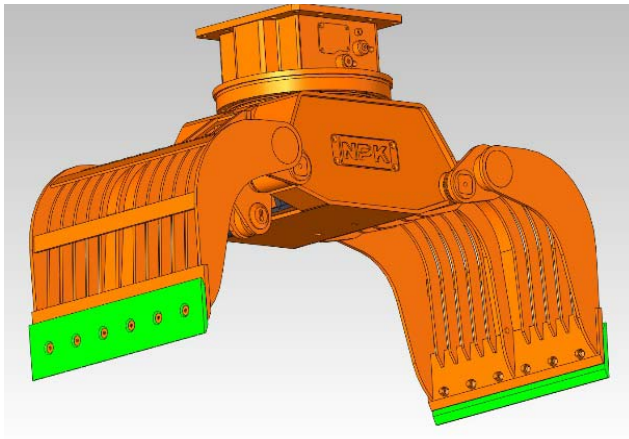
DG-20A



Product Info

Subject: DG-20A

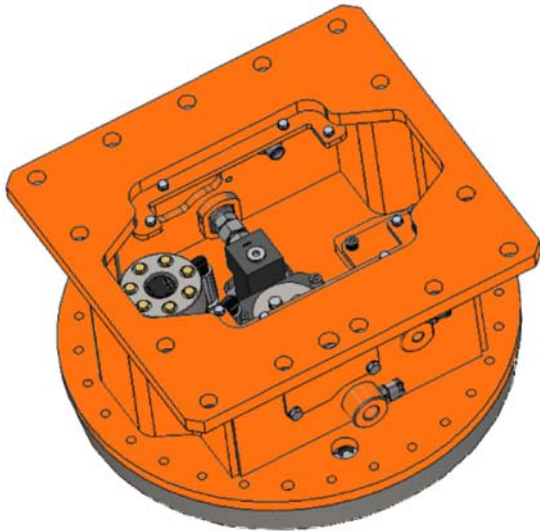
Date: May 2020



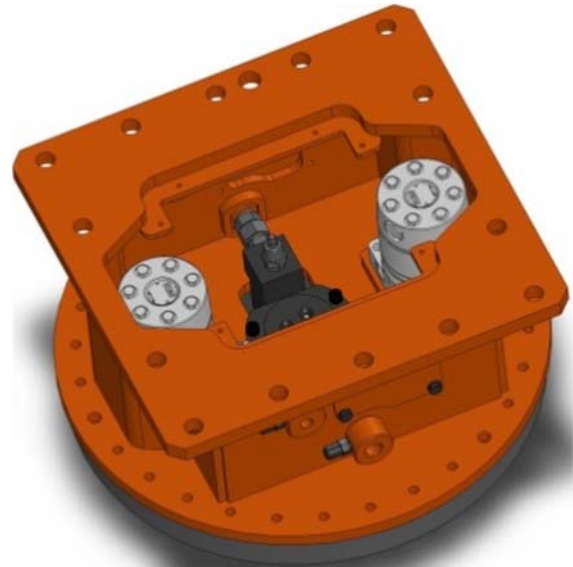
Subject: DG-20A

Date: May 2020

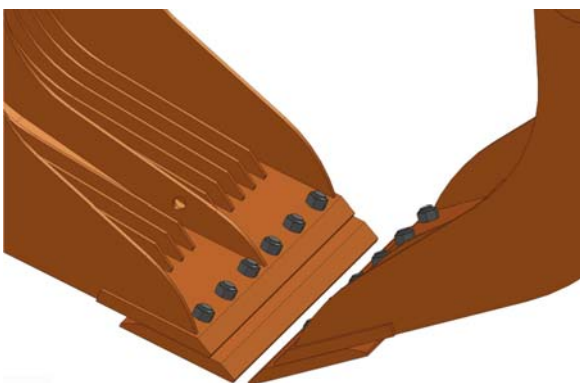
Options:



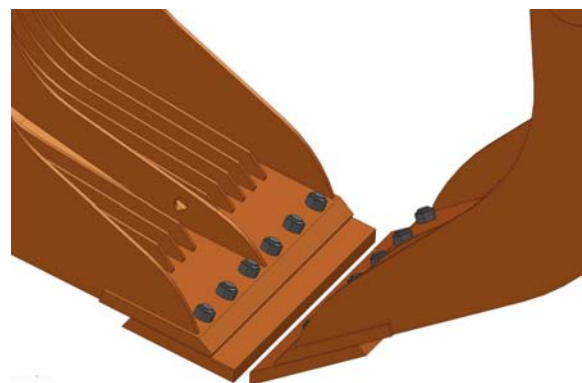
1 Motor



2 Motors



Sharp Edge Cutter

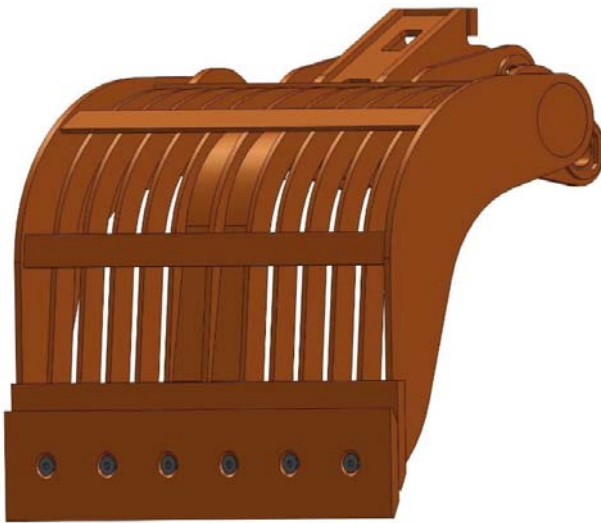


Blunt Edge Cutter

Product Info

Subject: DG-20A

Date: May 2020



With Bars



Perforated Plate

AVAILABILITY DG-20A

: July/ August

PRICING

: Please contact Robin Prein