

Subject: Novelties

Date: 08 ~14th of April 2019

Meet you on Bauma 2019

Only just a short time till world's biggest exhibition for building and construction, BAUMA 2019 ,in Munich will open its doors.

During Bauma , we will show all kind of NPK Products ; Breaker , Crusher, Cruncher, Compactors , Sheet Piler and Demolition grabs.

We are pleased to invite you to our stand No. **FN1115/1** in open area North.

On the following pages you will find the novelties we will show during Bauma.

We are looking forward to meet you.



Subject: Novelties

Date: 08 ~14th of April 2019**NPK Hydraulic Pulverizers V160R & V250R**

After last year's introduction of the V250R Hydraulic Pulverizer on the Intermat, now NPK extends the range of NPK Demolition Tools with the new V160R.

	V160R	V250R
Excavator weight (t)	: 16 – 21	24 – 35
Weight (kg)	: 1650	2750
Max Jaw Opening (mm)	: 750	900
Working pressure (MPa)	: 28	28
Oil Flow (l/min)	: 80 – 150	100 - 200
Rotation Pressure (MPa)	: 14	14
Rotation Oil Flow (l/min)	: 10 – 15	15 – 40
Max. force (a) (kN)	: 795	1020
Max. force (b) (kN)	: 1050	1330
Max. force (c) (kN)	: 1960	2250
Opening time (sec)	: 0,8	0,9
Closing time (sec)	: 1,8	2,3
Total cycle time (sec)	: 2,6	3,2
Number of Cycles (n/min)	: 23	19
Oil flow (l/min)	: 150	200

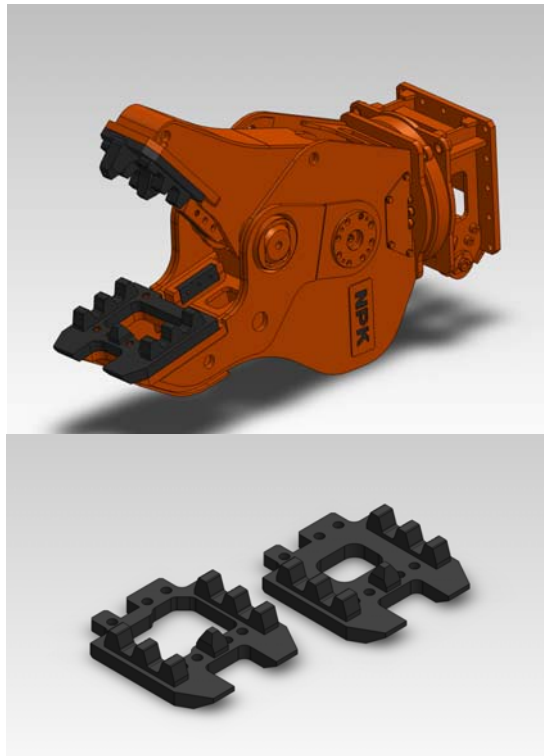


Subject: Novelties

Date: 08 ~14th of April 2019

Features new NPK V-series

- High Closing Force
- Double rotation motor on the V250R
 - Replaceable tooth plates
 - Teeth on Arm
 - Teeth on Frame
 - Rebar Cutter (length 200mm) in centre of jaw
 - No Drain Line required on rotation motor
- Standard: Tooth Plate in frame with large hole (for better release of material)
 - Option: Tooth Plate with small hole (for better crushing)



Subject: Novelties

Date: 08 ~14th of April 2019**SV140R & SV500R Hydraulic Crushers**

Due to successful sales of the **NPK's SV-Series SV250R, SV-65XR** and the strongest hydraulic crusher worldwide **SV-100XR**, **NPK Europe** now introduces the successors of the **SV-36XR (SV380R)** and **SV-47XR (SV500R)** as well as 2 smaller models **SV-7XR** and **SV140R**. All models are having the double cylinder and double booster feature (except SV-7XR and SV140R which has single booster), which makes them also the most powerful crushers in their class.

During **Bauma** the **SV140R** and **SV500R** will be shown.

	SV140R	SV500R
Excavator weight (t)	: 10 – 16	39 – 48
Weight (kg)	: 1450	4960
Max Jaw Opening (mm)	: 970	1750
Working pressure (MPa)	: 28	28
Oil Flow (l/min)	: 80 – 230	175-600
Rotation Pressure (MPa)	: 14	14
Rotation Oil Flow (l/min)	: 15 – 30	15 – 30
Max. force (a) (kN)	: 700	1780
Max. force (b) (kN)	: 1130	3020
Max. force (c) (kN)	: 2200	5670
Opening time (sec)	: 0,9	1,3
Closing time (sec)	: 1,9	2,9
Total cycle time (sec)	: 2,8	4,2
Number of Cycles (n/min)	: 21	14
Oil flow (l/min)	: 230	600

Subject: Novelties

Date: 08 ~14th of April 2019

Highlighted Features on the new SV-Series :

- Higher oil flow allowed
- High power and wider jaw opening
 - Higher crushing force
- Less noise from the cylinder covers
 - Booster without sequence valve
- Appropriate product weight matching with current excavators
 - Adjustable Rotation Speed (standard)

